

ACDEU



# Priming Assisted Centrifugal Pump

## Models PA4A60C-B-E30 460/3P PA4A60C-B-E30 575/3P

### Size 4" x 4"



Total Head		Capacity of Pump in U.S. Gallons per Minute (GPM) at Continuous Performance			
P.S.I.	Feet				
44.2	102	160	160	160	160
43.4	100	200	200	200	200
39.0	90	410	470	470	470
34.7	80	435	585	605	680
30.3	70	440	575	695	785
26.0	60	449	580	700	800
21.7	50	450	585	710	810
17.3	40	459	590	715	820
<b>Suction Lift</b>		<b>25'</b>	<b>20'</b>	<b>15'</b>	<b>10'</b>



**PUMP SPECIFICATIONS**

- Size:** 4" x 4" (102 mm x 102 mm) Flanged.
- Casing:** Gray Iron 30.  
Maximum Operating Pressure 66 psi (455 kPa).\*
- Semi-Open Type, Two Vane Impeller:** Ductile Iron 65-45-12.  
Handles 3" (76,2 mm) Diameter Spherical Solids.
- Impeller Shaft:** Stainless Steel 17-4 PH.
- Replaceable Wear Plate:** Carbon Steel 1015.
- Bearing Housing:** Gray Iron 30.
- Seal Plate:** Gray Iron 30.
- Seal:** Cartridge Type, Mechanical, Oil-Lubricated, Double Floating, Self-Aligning. Silicon Carbide Rotating and Stationary Faces. Stainless Steel 316 Stationary Seat. Fluorocarbon Elastomers (DuPont Viton® or Equivalent). Stainless Steel 18-8 Cage and Spring. Maximum Temperature of Liquid Pumped 160°F (71°C).\*
- Shaft Sleeve:** Alloy Steel 4130.
- Priming Chamber:** Gray Iron 30 Housing w/Stainless Steel Float and Linkage.
- Discharge Check Valve:** Ductile Iron Housing w/Buna-N Flapper.
- Radial Bearing:** Open Single Ball.
- Thrust Bearing:** Open Double Ball.
- Bearing and Seal Cavity Lubrication:** SAE 30 Non-Detergent Oil.
- Suction Spool Flange:** Gray Iron 30.
- Gaskets:** Vegetable Fiber and Buna-N.
- O-Rings:** Buna-N.
- Hardware:** Standard Plated Steel.
- Bearing and Seal Cavity Oil Level Sight Gauges.**
- \*Consult Factory for Applications Exceeding Maximum Pressure and/or Temperature Indicated.
- Standard Equipment:** Belt-Driven Air Compressor. Hoisting Bail. Skid Base. Strainer.
- Optional Equipment:** Heated Priming Chamber Kit. NPT Threaded Flange Kit. Single and Double Ball Type Float Switch.\*\*
- \*\*50 Ft. (15 m) Standard Length; Dual Switches and Alternate Cable Lengths Available From the Factory.

**WARNING!**  
Do not use in explosive atmosphere or for pumping volatile flammable liquids.

**MOTOR SPECIFICATIONS ‡**

- Type:** EISA Premium Efficiency Totally Enclosed Fan Cooled.
- Frame Size:** 286T.
- Power:** 30 H.P. (22 kW).
- Voltage/Phase:** 460/3 or 575/3.
- Hz:** 60.
- S.F.:** 1.25.
- Speed:** 1800 RPM Nominal.
- Full Load Amps:** (460/3P) 35.1, (575/3P) 28.1.
- Locked Rotor kVA Code:** G.
- Bearings:** Ball Type.

**CONTROL SPECIFICATIONS**

NEMA Type 3R Intrinsically Safe Rain and Sleet (Ice) Resistant Enclosure. Carbon Steel with Powder Coat. Hand Off/Auto Switch Control with Across-The-Line Starter. 3 Pole Instantaneous Trip 150 Amp Circuit Breaker Type HMCP.

‡ Standard Specifications Shown. Alternate Motors Available - Consult Factory.



THE GORMAN-RUPP COMPANY • MANSFIELD, OHIO

GORMAN-RUPP OF CANADA LIMITED • ST. THOMAS, ONTARIO, CANADA

www.grpumps.com

Specifications Subject to Change Without Notice

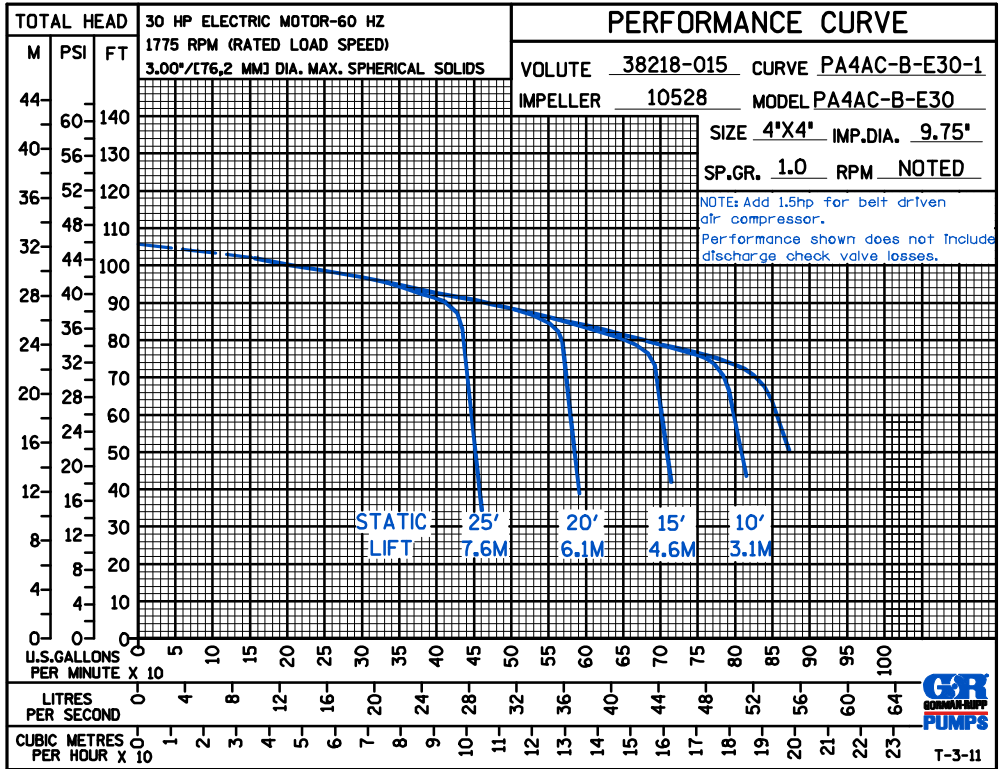
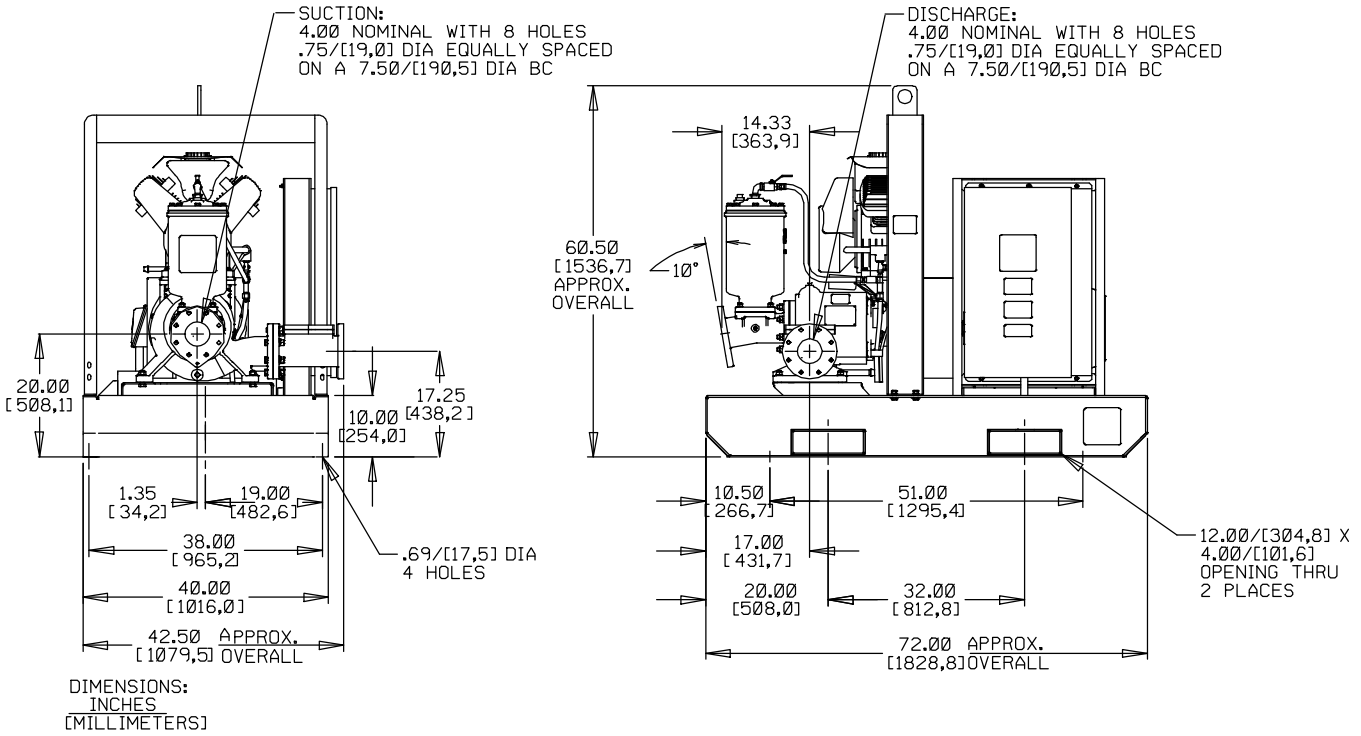
Printed in U.S.A.

**Specification Data**

**SECTION 42, PAGE 190**

APPROXIMATE  
DIMENSIONS and  
WEIGHTS

**NET WEIGHT:** 2150 LBS (975,2 K.G.) 2650 LBS (1202 K.G.)  
**SHIPPING WEIGHT:** 2350 LBS (1065,9 K.G.) 2650 LBS (1202 K.G.)  
**EXPORT CRATE SIZE:** 520 CU. FT. (14,7 CU. M.)



**THE GORMAN-RUPP COMPANY • MANSFIELD, OHIO**

GORMAN-RUPP OF CANADA LIMITED • ST. THOMAS, ONTARIO, CANADA

Specifications Subject to Change Without Notice

Printed in U.S.A.